



FEATURES

- Perkins1004-4L03
- SDLG 3 speed transmission
- SDLG axles with air over hydraulic disc brakes
- A/C ROPS cabin with pillarless wrap around windscreen for maximum visibility
- Single lever hydraulic pilot control
- 2 years or 2000 hours warranty

OPTIONS

- Optional hydraulic quick hitch
- Optional full powered hydraulic 3rd function
- Optional auto weighing equipment
- Optional auto greasing system
- Large range of practical attachments available

SPECIFICATIONS

Item	Performance
Engine horse power	58 kW / 78 HP
Max. traction force (by engine)	≥48 kN
Operating weight	6,100kg / 6.1t
Standard bucket capacity	1.0 m ³
Rated load	1800 kg / 1.8 t
Max. brakeout force	≥48 kN / 4895 kg / 4.89 t
Grade ability	≥36 kN / 3671 kg / 3.67 t
Min. turning radius outside rear wheel	4546 mm
Min. turning radius outside bucket	5078 mm

ENGINE

Item	Performance
Model	1004-4L03
Type	Straight-lined, water cooled, 4 stroke, direct injection
Rated power	58 kW
Rated rpm	2400 rpm
Displacement	3.99 L
Cylinder No.	4
Cylinder bore/stroke	100/127 mm
Min. fuel consumption	≤235 g/kW.h
Max. torque	260 N.m

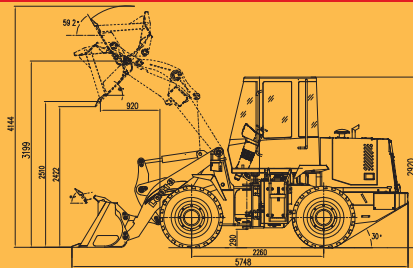
WORKING SYSTEM

Item	Performance
Type	Single level hydraulic pilot control
Boom cylinder - cylinder bore x piston rod diameter x stroke	80×45×695 mm
Bucket cylinder - cylinder bore x piston rod diameter x stroke	100×55×404 mm
Pump	CBGjA2050
Multiple directional control valve	ZL20DL1-02
Working pressure	2538 Psi
Lifting time (max load)	≤5.2s
Lowering time (empty)	≤3.6s
Dumping time (empty)	≤0.73s
Total	≤9.53s

STEERING SYSTEM

Item	Performance
Type	Full-hydraulic articulated steering
Pilot - actuated valve	VLE-150
Steering pump	CBGjA2050
Steering cylinder - cylinder bore x piston rod diameter x stroke	63×35×290 mm
Redirector	BZZ-320
Steering angle	35°
Working pressure	2030 Psi

DIMENSIONS OF 918



TRANSMISSION

Item	Performance		
Torque convertor	Type	Single phase, 3 element, hydraulic converter	
	Torque ratio	3.43	
	Cooling system	Circulated, water cooled	
	Inlet oil pressure	79.77 - 94.27 Psi	
	Outlet oil pressure	29.01 - 43.51 Psi	
Travel speed	Speeds	I II	
	Forward	010 km/h 0-26.5	
	Reverse	0-9.6 km/h 0-25	
Transmission	Type	Dead axle power shift + high & low speed	
	Shift	Forward 2, Reverse 2	
	Transmission ratio	Forward I	2:154
		Forward II	0:768
		Reverse I	2:207
		Reverse II	0:785
	Model of Transmission pump	CB-FA25-FL-X	
Working pressure	199.1-227.6 Psi		
Main drive	Type	Single stage, spur gear	
	Gear ratio	5:833	
Final drive	Type	Single stage, planetary shift	
	Gear ratio	3:9	
Driving axle and tyre	Type	Driving axle and tyre	
	Tyre specification		16/70-20
	Tyre pressure	Front wheel	50 Psi
		Rear wheel	41 Psi
Brake system	Service brake	Air over hydraulic disc brake on 4 wheels	
	Service brake	99.5-113.7 Psi	
	Parking brake	Internal expansion type braking	

SERVICE REFILL CAPACITIES

Item	Performance	Item	Performance
Fuel	120L	Engine	6.8-8.5L
Hydraulic oil	100L	Gear box	20L
Axles (main drive and final drive)	2x8L	Brake system	4L

DIMENSIONS

Item	Performance	Item	Performance
Length (With bucket on ground)	5748 mm	O/s to o/s width of wheels	2040 mm
Height	2920 mm	Wheel centre to wheel centre	1630 mm
Max. dumping height (-45° dump angle)	2422 mm	Front wheel to bucket edge	920 mm
Bucket width	2140 mm	Wheelbase (front/back)	2260 mm

